

FLAGSTAFF

FLAGSTAFF

MAC, CLASSIC, HIGH WALL, & HARD SIDE CAMPERS



MAC, CLASSIC, HIGH WALL, & HARD SIDE CAMPERS





206ST





FLAGSTAFF MAC

MAKING YOUR INVESTMENT GO A LONG WAY. Flagstaff takes pride in packing the most value possible into our Mac series. While coming standard with many features, you still have flexibility to incorporate as many options as you choose to fit your camping preferences.

MAC

Water Pump w/ Filter
(Std.)



Easy Glide Scissorpole Bed Supports
(Except LTDs)



Toylot Mounted Locking System
(Std. BR23SC, BR28TSC, 228BH,
HW31SCTH, T12BH, T12RBTH Only)



Heated Mattress
(Std. Opt.)



Outside Grill with Work Table
(Std. MAC, Classic, Hard Side, High Wall)



EZ Reach Storage Trunk
(Some Models)



Crank Down Stabilizer Jack (Std.)



Swing Down Galley
(Except LTD, High Wall, Hard Side)

FLAGSTAFF

CLASSIC

A PROVEN TRACK RECORD MAKES THIS UNIT A CLASSIC. Year in and year out the Classic series consistently delivers with outstanding features and styling to enhance your camping experience. The swing down galley and standard power lift make the Classic a breeze to set up. The expansive seating throughout the camper gives everyone plenty of room to sit and enjoy themselves.



Easy Opening Deluxe Pull-up Curtains.
(Std. Classic and High Wall)



LED Bunk Light and Fan
(Std. Classic & High Wall)



Metal Full Extension Drawer Guides *(Std.)*



Bike Rack Option
(Most Models)



Fantastic Fan *(Except LTD's.)*



Outside Shower
(Incl. w/ Hot Water Pkg: Std: Classic, Hard Side, High Wall and Opt: MAC)



Solar Panel Pprep *(Std. all models)* **The Zamp 40 amp. portable solar panel** shown is sold separately.



One-Piece Door *(Except LTD's, Hard Side)* and **Large Entry Assist Handle** *(Except LTD's)*



425D





HW27KS



FLAGSTAFF

HIGH WALL



IT'S YOUR VACATION. WHY NOT GO IN STYLE? The Flagstaff High Wall campers are perfect for those families who want the luxurious features of a travel trailer in a much lighter towable option. The Cherry colored cabinetry, stainless steel finishes and beautiful tile-look flooring puts this camper in a class of its own.

HIGH WALL

AM/FM Stereo with CD Player (Std. Classic, Hard Side & High Wall. HW29SC Std. w/ AM/FM/CD Stereo with DVD Player)



Black Water Hose Storage
(Std. HW models)

Hanging Wardrobe
(Opt. all Models Except MAC, Hard Side & LTD's)



Beautiful Hardwall Shower with a residential-style flush toilet complete with a 12-gallon black water holding tank and monitor panel
(Std. High Wall)

Power Lift (Std. Classic, High Wall and MAC BR models. Opt. MAC/LTD)



Double Entry Step (Std. MAC BR Models, All HW Models, and Hard Side T21QBHW)



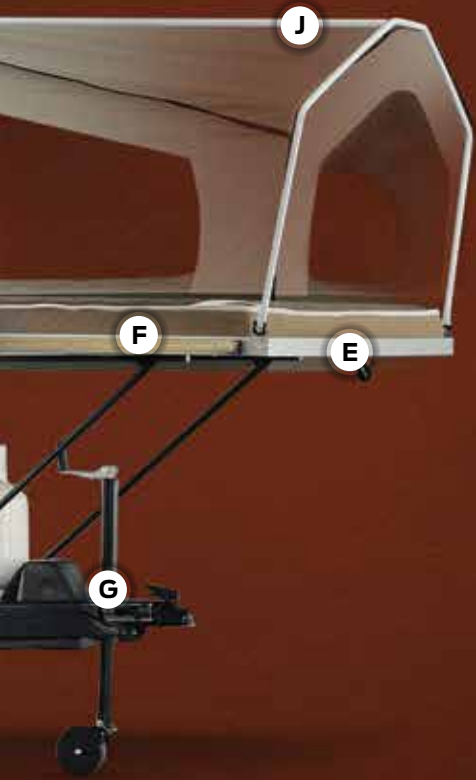
Add-a-Room with Privacy Panels
(Opt. all Models Except Hard Side)



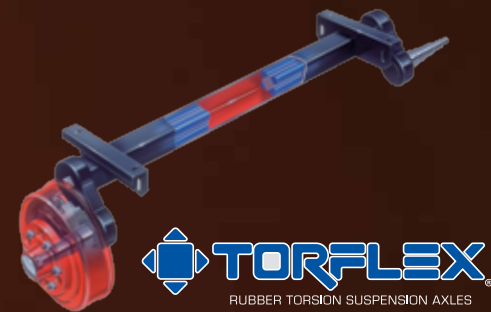
FLAGSTAFF

CONSTRUCTION

HIGH QUALITY CAMPERS WHICH ARE BUILT TO ENDURE. Quality built trailers always bring the same results: long-lasting products you can depend on to enjoy with your family year after year. These are some of our highlights.



- A** Three Stage Double Arm Lifter Posts *(NA Hard Side)*
- B** Fiberglass Vacuum Bonded Radius Roof w/
No Center Seam *(NA Hard Side)*
- C** Five-Piece Vinolon Supreme Tenting *(NA Hard Side)*
- D** E-Z Crank Down Stabilizer Jacks w/Sand Pads
- E** Full Perimeter Aluminum Bed Frames *(NA Hard Side)*
- F** Plywood Bunk Ends *(NA Hard Side)*
- G** Seven-Way Pigtail Wiring
- H** Under Floor 20 Gallon Fresh Water Tank
(LTDs 11 Gallon Above Floor)
- I** Powder Coated Tubular Steel Frame
- J** Powder Coated Rafter Poles and Bed Bows
(NA Hard Side)
- K** Air Conditioner Reinforcing Laminated Into Roof
(NA Hard Side)
- L** Steel Belted Radial Tires
- M** Easy Lube Axles *(Except LTDs)*
- N** Smooth Fiberglass Vacuum Bonded Exterior
(NA on MAC/LTDs)
- O** One-Piece Door *(Except LTDs & Hard Side)*



DEXTER TORFLEX

(Standard on Classic, High Wall and Hard Side Models)

- Independent wheel suspension and self-damping action
- Rubber cushioning eliminates metal-to-metal contact.
- Forged torsion arm for maximum strength

Most models are also equipped with E-Z Lube® System and Nev-R-Adjust® Brakes.

FLAGSTAFF

HARD SIDE

VACATIONS LIKE A TRAILER & STORES LIKE A CAMPER. The Hard Side folding camper brings a smooth, fiberglass vacuum bonded exterior with quick, easy set up, while retaining the towing and storage advantages of the Classic tent camper. Making it the perfect product for your camping adventure.



Gas Strut Lift Assist
(Std. Hard Side Models Only)



Molded LP Bottle Covers
(Std. Hard Side, High Wall Models Only)



Power Roof Lift Assist
(Std. T19QBHW, T19SCHW, T12QBHW Only)



Hard Side Awning & Screen Room option.

SPECIFICATIONS. Model number of any particular unit does not necessarily reflect the overall length of the unit itself.

MODEL	T12RB	T12RBST	T12RBSOR	T12DDST	T12BH	T12RBTH	T19QBTH	T19SCHW	T21QBHW
BASE/DRY UNIT WEIGHT	1893	1955	2085	1941	1943	2186	2100	2052	2332
BASE DRY HITCH WEIGHT	247	283	300	290	268	354	330	327	336
BASE DRY AXLE WEIGHT	1646	1672	1785	1651	1675	1832	1770	1725	1996
CARGO CAPACITY	1005	1217	1217	1217	1217	1630	1192	1237	966
BOX SIZE	12'	12'	12'	12'	12'	12'	12'	12'	14'
TRAILER SIZE (CLOSED W/ HITCH)	17' 1"	18' 11"	19' 1"	18' 11"	19' 2"	22' 1"	18' 11"	18' 11"	20' 10"
HEIGHT (CLOSED)	60"	60"	65"	60"	60"	65"	66"	66"	67"
FRESH WATER CAPACITY	26	26	26	26	26	26	26	26	26

The Base/Dry Unit Weight listed represents the weight of one trailer with that model's standard equipment including the content of specified Option Packages. The actual weight of a trailer with its specific option content is documented on the yellow weight tag attached to the unit when weighed upon completion. This weight is provided for use in comparison to the manufacturer's published towing capacity of potential tow vehicles.



T12RBTH



T19QBHW



HARD SIDE



FLAGSTAFF

CLASSIC

SPECIFICATIONS. Model number of any particular unit does not necessarily reflect the overall length of the unit itself.

MODEL	425D	625D	627D	823D
BASE/DRY UNIT WEIGHT	2446	2473	2555	2445
BASE DRY HITCH WEIGHT	303	292	370	358
BASE DRY AXLE WEIGHT	2143	2181	2185	2087
CARGO CAPACITY	838	800	796	894
BOX SIZE	12'	12'	14'	12'
TRAILER SIZE (Closed w/ Hitch)	19' 1"	19' 1"	19' 4"	19' 1"
HEIGHT (Closed)	61"	61"	61"	61"
TRAILER LENGTH (Open)	23' 9"	23' 9"	25' 9"	23' 9"
FRESH WATER CAPACITY	26	26	26	26

The Base/Dry Unit Weight listed represents the weight of one trailer with that model's standard equipment including the content of specified Option Packages. The actual weight of a trailer with its specific option content is documented on the yellow weight tag attached to the unit when weighed upon completion. This weight is provided for use in comparison to the manufacturer's published towing capacity of potential tow vehicles.

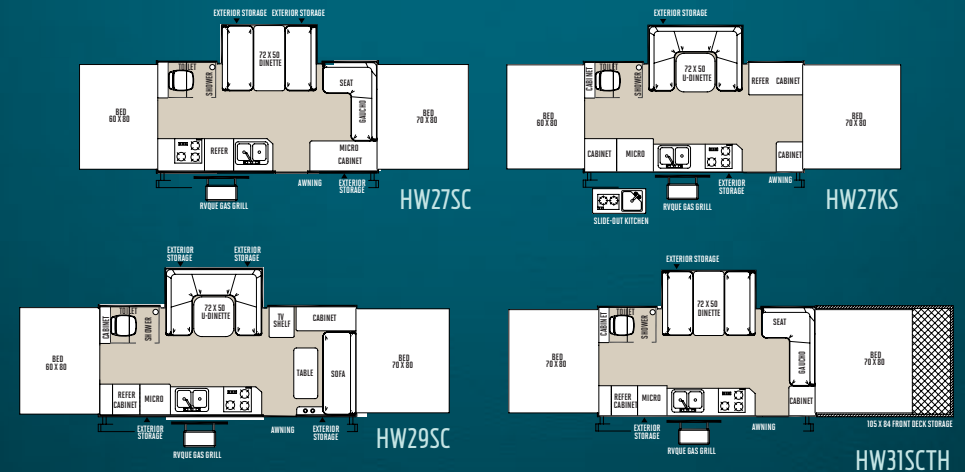
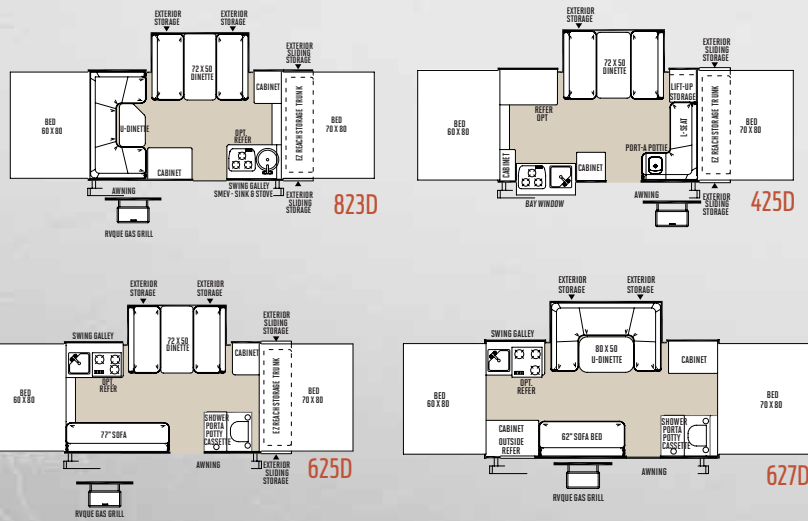
FLAGSTAFF

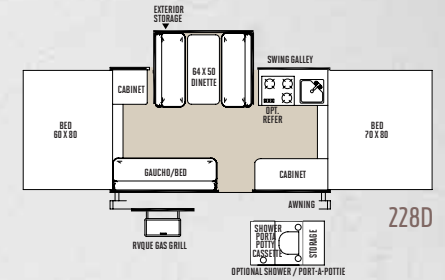
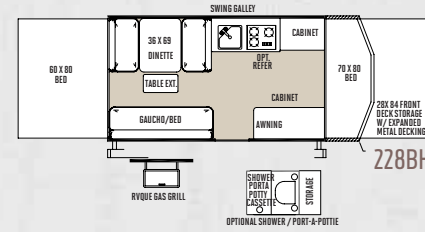
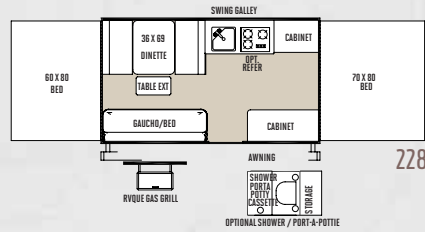
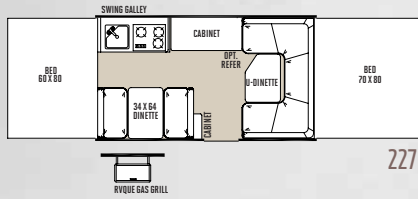
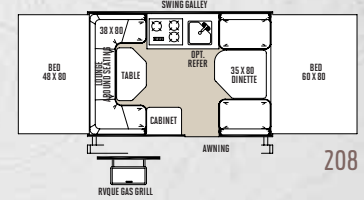
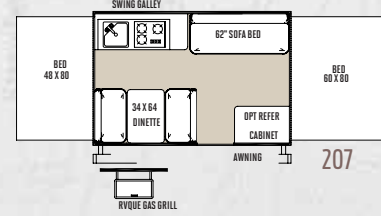
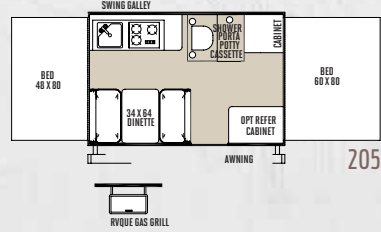
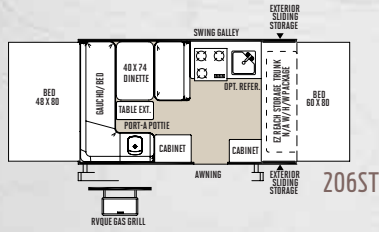
HIGH WALL

SPECIFICATIONS. Model number of any particular unit does not necessarily reflect the overall length of the unit itself.

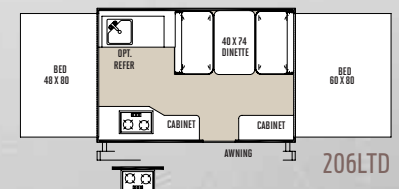
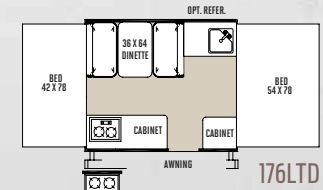
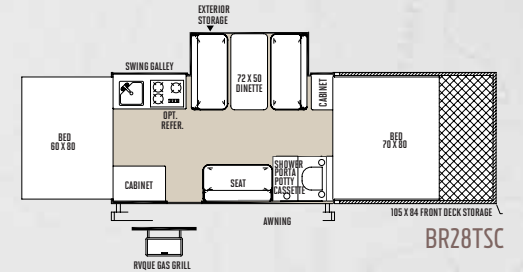
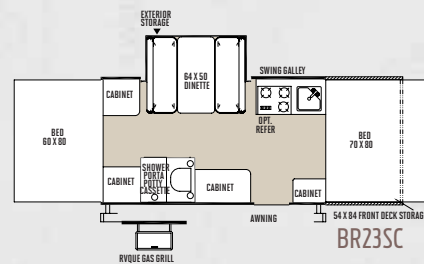
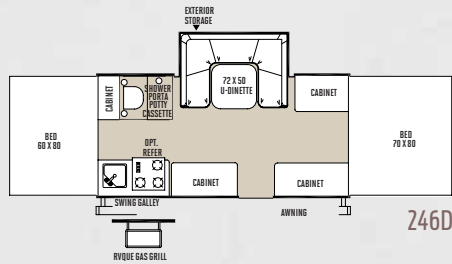
MODEL	HW 27SC	HW 27KS	HW29SC	HW31SCTH
BASE/DRY UNIT WEIGHT	2806	2962	3135	3738
BASE DRY HITCH WEIGHT	279	370	373	337
BASE DRY AXLE WEIGHT	2527	2592	2762	3401
CARGO CAPACITY	935	870	1217	2317
BOX SIZE	14'	14'	16'	14'
TRAILER SIZE (Closed w/ Hitch)	19' 4"	19' 4"	21' 4"	28' 4"
HEIGHT (Closed)	71"	71"	72"	72"
TRAILER LENGTH (Open)	25' 9"	25' 9"	27' 9"	33' 9"
FRESH WATER CAPACITY	26	26	26	26
GRAY WATER CAPACITY	12	12	12	12
BLACK WATER CAPACITY	12	12	12	12

The Base/Dry Unit Weight listed represents the weight of one trailer with that model's standard equipment including the content of specified Option Packages. The actual weight of a trailer with its specific option content is documented on the yellow weight tag attached to the unit when weighed upon completion. This weight is provided for use in comparison to the manufacturer's published towing capacity of potential tow vehicles.





FLAGSTAFF MAC



SPECIFICATIONS. Model number of any particular unit does not necessarily reflect the overall length of the unit itself.

MODEL	206ST	205	207	208	227	228	228BH	228D	246D	BR23SC	BR28TSC	176LTD	206LTD
BASE/DRY UNIT WEIGHT	1944	1732	1764	1737	2006	2050	2122	2153	2364	2579	2975	1344	1493
BASE DRY HITCH WEIGHT	245	240	252	219	293	331	382	313	249	310	219	190	174
BASE DRY AXLE WEIGHT	1699	1492	1512	1518	1713	1719	1740	1840	2115	2269	2756	1154	1319
CARGO CAPACITY	1032	917	866	866	966	966	991	891	866	1212	2317	683	762
BOX SIZE	10'	10'	10'	10'	12'	12'	12'	12'	14'	12'	12'	8'	10'
TRAILER SIZE (Closed w/ Hitch)	17' 1"	15' 3"	15' 3"	15' 3"	17' 2"	17' 2"	18' 8"	17' 2"	19' 2"	21' 9"	26'	12'	14'
HEIGHT (Closed)	57"	57"	57"	57"	57"	57"	57"	57"	57"	62 1/2"	62 1/2"	56"	56"
TRAILER LENGTH (Open)	20' 4"	20' 1"	20' 1"	20' 1"	23' 10"	23' 10"	23' 10"	23' 10"	25' 10"	26' 5"	30' 8"	17' 1"	20' 1"
FRESH WATER CAPACITY	20	26	20	20	20	20	20	20	26	26	26	11	11

The Base/Dry Unit Weight listed represents the weight of one trailer with that model's standard equipment including the content of specified Option Packages. The actual weight of a trailer with its specific option content is documented on the yellow weight tag attached to the unit when weighed upon completion. This weight is provided for use in comparison to the manufacturer's published towing capacity of potential tow vehicles.

STANDARDS & OPTIONS

MODELS	LTD	M	C	HW	HS
STANDARD & OPTIONAL FEATURES					
Cherry Interior with "Tile-Look" Linoleum	--	--	S	S	S
Hickory Interior with "Tile-Look" Linoleum	S	S	--	--	--
Two-Tone Fabric Interiors	S	S	S	S	S
Residential Style Kitchen Faucet	S	S	S	--	S
Stainless Steel Look Appliances and Sink	--	--	S	S	S
Double Pan Sink with High Rise Faucet (HS: T19SCHW, T21QBHW Only)	--	--	--	S	S*
Electric Water Pump	S	S	S	S	S
Hot Water Package (Incl. Water Filter, Outside Shower, Six Gallon DSI Hot Water Heater) (M: 206ST, 207, 208, 227, 228, 228BH, 228D)	--	0*	S	S	S
Port-a-Potty (M: 206ST Only HS: T12RB, T12RBST, T12BH, T12DDST, T12RBTH, T19QBHW, T21QBHW Only)	--	S*	S*	--	S*
Shower Cassette Package Incl. Water Filtration System, Six Gallon DSI Hot Water Heater, Demand Water Pump, and Cassette Toilet (Opt. M: 228, 228BH, 228D) (Std. L: 205, 246D, BR23SC, BR28TSC C: 625D, 627D)	--	S*/0*	S*	--	S*
Hard Wall Shower with Residential Flush Toilet and Monitor for Holding Tanks, Battery and Water Pump Switch	--	--	--	S	--
Antifreeze Inlet to Bypass Fresh Water Tanks When Winterizing	S	S	S	S	S
Fold Over Galley with Upper and Lower Storage (Std. C: 425D Only)	S	--	S*	--	--
Two Burner Free-Standing Range	S	--	--	--	--
Swing Level Galley with Storage (N/A C: 425D, 823D)	--	S	S*	--	--
Permanently Mounted 3-Burner Indoor Range w/ Stove Cover	--	S	--	--	--
Permanently Mounted 3-Burner Indoor Range w/ Glass Stove Top Cover	--	--	S	--	S

MODELS	LTD	M	C	HW	HS
Three Burner Glass Top Stove with Oven (HS: T19SCHW, T21QBHW Only)	--	--	--	S	S*
Microwave	--	--	--	S	S
Large Built-In Icebox	S	S	S	--	--
110V Electric Outside Accessible Refer (C: 627D Only)	--	--	S*	--	--
3 Way Refer 1.9 cu. ft.	0	0	--	--	--
3 Way Refer 2.5 cu. ft.	--	--	0	--	S
Extra Large 3 Way Refer (HS: T19SCHW, T19QBHW, T21QBHW Only)	--	--	--	0	S*
Free Standing Lite-Ply Table – High Pressure Laminate (Most Models)	S	S	S	S	S
Comfortable Family Style Dinette w/ 4" Cushions	S	S	S	S	S
Residential Style Raised Panel Doors	--	--	S	S	S
Wood Drawers w/ Full Extension Metal Guides	S	S	S	S	S
Large Clothes Bar	--	--	S	S	S
Hanging Wardrobe	--	--	0	0	--
Hanging Pantry	--	0	0	0	--
AM/FM Stereo with CD player	--	--	S	S	S
AM/FM Stereo with CD and DVD player (HW29SC Only)	--	--	--	S*	--
TV Outlet with Cable and Satellite Hook Up	--	S	S	S	S
LCD TV (HW29SC Only)	--	--	--	S*	--
30 Amp Detachable Power Cord w/ Storage Bag	--	S	S	S	S
25 Amp Converter w/ Built in Battery Charger	S	--	--	--	--
35 Amp Converter w/ Built in Battery Charger	--	S	S	S	S
12V Safety Breaker	S	S	S	S	S
Roof Vent	S	--	--	--	--
Create-A Breeze Three Speed Fantastic Fan	--	SO	SO	SO	SO
Air Conditioner Wiring Kit	0	0	0	0	--
10k BTU Cool Cat Heat Pump	--	--	--	--	S
13.5k BTU Air Conditioner (Factory Installed)	--	--	--	0	--
20k BTU Forced Air Furnace w/ Electric Ignition	0	0	0	0	0
Interior Floor Lights	--	--	--	S	S

MODELS	LTD	M	C	HW	HS
2 Ceiling LED Lights w/ Jacks for Accessories	S	--	--	--	--
2 Ceiling LED Lights	--	--	--	--	S
3 Ceiling LED Lights w/ Jacks for Accessories	--	S	S*	--	--
4 Ceiling LED Lights w/ Jacks for Accessories (P: 627D Only)	--	--	S*	S	--
Bunk LED Light with Fan	--	--	S	S	--
Additional LED Bunk Light (M: 228D, 246D, BR23SC, BR28TSC Only)	--	S*	S	S	--
LP Leak/ Carbon Monoxide Detector	S	S	S	S	S
Privacy Curtains	S	CP	CP	CP	S
Deluxe Pull Up Curtains	--	--	S	S	--
Roof Valances	--	CP	CP	CP	--
Quilted Top Bed Mattresses	S	S	--	--	--
Quilted Top Innerspring Mattresses (HS: T12RB, T12BH, T12RBST Only)	--	--	S	S	S*
Quilted Top 60" x 80" Innerspring Mattresses (HS: 19QBHW, T21QBHW Only)	--	--	--	--	S*
Thermostatically Controlled Heated Mattresses (HS: T12RB, T12BH, T12RBST, T12RBTH, T19QBHW, T21QBHW Only)	SO	SO	SO	SO	S*
Leaf-Spring Axle	S	S	--	--	--
Independent Torsion Axles	--	--	S	S	S
Easy Lube Axles	--	S	S	S	S
Spare Tire, Cover and Mount	S	TP	TP	TP	S
12" Radial Tires	S	--	--	--	--
13" Radial Tires	--	S*	--	--	--
13" Radial Tires with Aluminum Wheels	--	--	S	--	S
14" Radial Tires w/ Aluminum Wheels (Std. HS: T21QBHW Only) (Note: Dual Axle Models HW: HW29SC, HW31SCTH)	--	--	--	S	--
15" Mud Rover Radial Tires, Aluminum Wheels (Std. T12RBTH, T12RBSOR Only). With Shocks (Std. M: BR23SC, BR28TSC Only) (Note: Dual Axle Model F: BR28TSC)	--	S*	--	--	S*
Electric Brakes	0	S	S	S	S



MODELS	LTD	M	C	HW	HS
Slam Latches on Front Trunk Side Doors (C: 823D, 425D, 625D Only)	--	--	S*	--	--
EZ Reach Storage w/ Sliding Tray on All Front Trunk Models (HS: T19SCHW, T19QBHW, T21QBHW Only)	--	S*	S*	--	S*
28.5" Front Storage Deck w/ 200 # Weight Capacity (Std. M: 228BH, HS: T12BH Only)	--	S*	--	--	S*
54" Front Storage Deck w/ 650 # Wt. Capacity (Std. C: BR23SC)	--	S*	--	--	--
57" Front Storage Deck w/ 650 # Wt. Capacity (Std. HS: T12RBTH)	--	--	--	--	S*
105" Front Storage Deck w/ 1300 # Weight Capacity (Std. M: BR28TSC, HW: HW31SCTH Only)	--	S*	--	S*	--
Toylok Mounting Locking System (M: BR23SC, BR28TSC, 228BH, HW31SCTH, HS: T12BH, T12RBTH)	--	S*	--	S*	S*
(4) Bike Rack (N/A M: BR23SC BR28TSC HS: T12RBTH, HW: HW31SCTH) (Note: HS: T12RB - 2 Bikes only)	0	0*	0	0*	0*
Power Lift System (Std. M: BR23SC, BR28TSC)	0	0*	S	S	--
Built-in A-Frame Mounting Provision for Equalizer					
Hitch Bar Installation	S	S	S	S	S
Battery Box and Wiring Kit	0	S	S	S	S
Solar Panel Prep	S	S	S	S	S
20 lb. LP Bottle	S	S	S	--	--
Dual 20 lb. LP Bottles with Cover and Automatic Regulator (Std. M: BR23SC, BR28TSC Only)	0	0*	0	--	--
Dual 20 lb. LP Bottles with Molded Hard Cover and Automatic LP Regulator	--	--	--	S	S
Diamond Plated Lower Front Cap	--	--	S	S	S
Diamond Plated Front, Rear and Side Skirt (M: BR23SC, BR28TSC Only)	--	S*	--	--	--
Awning	S	S	S	S	--
Awning/Screen Room	--	--	--	--	0
Screen Room w/ Privacy Panels	0	0	0	0	--

MODELS	LTD	M	C	HW	HS
Outdoor Gas Grill w/ Worktable	0	S	S	S	S
Outside Speaker	--	--	S	S	S
Patio Light (LTD: 206LTD Only)	S*	CP	CP	CP	S
Courtesy Light on Front (M: 228BH, BR23SC, BR28TSC, HW: HW31SCTH, HS: All Models)	--	S*	--	--	S
110V Exterior Outlet (LTD: 206LTD only)	S*	CP	CP	CP	S
Black Water Hose Storage	--	--	--	S	--
Door Step	S	TP*	TP	--	S
Double Door Step (M: BR23SC, BR28TSC Only, HW: All Models, HS: T12RBSOR, T12RBTH, T21QBHW Only)	--	TP*	--	TP	--
One Piece Screen Door	--	S	S	S	--
Vented Entrance Door Window w/ Screen	--	--	--	--	S
Folding Grab Handle	--	S	S	S	S
Exterior Graphic Design	S	S	S	S	S

TRAVEL PACK (Incl. Spare Tire, Tire Bracket,
Tire Cover, Installed Step)

CONVENIENCE PACK (Incl. Privacy Curtains, Roof
Valances, A/C Bracing, Patio Light, 110V Exterior Outlet)

STANDARD CONSTRUCTION FEATURES

Completely Enclosed Living Area	--	--	--	--	S
Fiberglass Vacuum Bonded Roof with Metal Interior Roof	--	--	--	--	S
Gas Strut Lift Assist	--	--	--	--	S
Power Roof Lift Assist (HS: T19SCHW, T19QBHW, T21QBHW Only)	--	--	--	--	S*
Large Rear Roof Tinted Sky Light with Shade	--	--	--	--	S
Two Front Roof Tinted Windows with Shades	--	--	--	--	S
Fiberglass Vacuum Bonded Radius Roof w/ No Center Seam	S	S	S	S	--

MODELS	LTD	M	C	HW	HS
Steel Air Conditioner Vent Reinforcing Laminated Into Roof	S	CP	CP	CP	--
CP 3-Stage Double Arm Lifter Posts	S	S	S	S	--
Smooth Fiberglass Vacuum Bonded Exterior	--	--	--	--	S
Lower Door Operational in Closed Position	S	S	S	S	--
Five Piece Sectionalized Vinolux Supreme Tenting	S	S	S	S	--
Tent Permanently Attached on Bunk Ends and Slide Out	S	S	S	S	--
Plywood Bunk Ends	S	S	S	S	--
Full Perimeter Aluminum Bed Frames	S	S	S	S	--
Easy Glide Scissor Pole Bed Supports	--	S	S	S	--
Powder Coated Rafter Poles and Bed Bows	S	S	S	S	--
Tinted Vinyl Windows	S	S	S	S	--
Large, Opening Picture Window	--	--	--	--	S
One Piece Undercoated Structure Wood Floor	S	S	S	S	S
Powder Coated Tubular Steel Frame	S	S	S	S	S
Rear Crank Down Stabilizer Jacks w/ Sand Pads	S	--	--	--	--
(4) E-Z Crank-Down Stabilizer Jacks w/ Sand Pads	--	S	S	S	S
Seamless, High Density Polyethylene					
Wheel Wells	S	S	S	S	S
11 Gallon Fresh Water Tank	S	--	--	--	--
Under Floor 20 Gallon Fresh Water Tank	--	S	S	S	S
12 Gallon Gray Water Holding Tanks	--	--	--	S	--
12 Gallon Black Water Holding Tank	--	--	--	S	--
2000 lb. Tongue Jack w/ Swivel Wheel	S	S	S	S	S
Power Front Jack	--	--	--	0	0
7-Way Pigtail Plug	S	S	S	S	S



PRE-DELIVERY INSPECTION FACILITY

20,000 square feet of quality assurance. The bare essentials for a premium product. This state-of-the-art facility gives immediate daily feedback to production for quality assurance in every unit built.



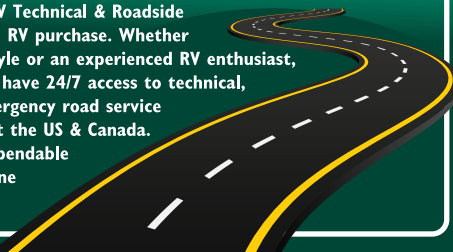
Forest River, Inc. encourages our customers to purchase their Forest River products from a local dealership whenever possible for the following reasons:

- 1) Forest River, Inc. dealers are independently owned and operated businesses so priority service and scheduling is at their discretion and is often provided to customers that purchased their unit at that dealership.
- 2) Purchasing locally allows customers to establish meaningful relationships with a dealer, enhancing the RV experience through assistance with product questions, user tips or RV regulations for your state or country, and much more!
- 3) Canadian customers must meet requirements to bring an RV purchased out of the country to their home. These requirements may involve additional inspections and certifications, taxes and fees. Your local Canadian Dealer is a professional at meeting these requirements.
- 4) Scheduling timely warranty repairs and adjustments through a local dealership provides far greater flexibility and convenience to you, the customer!

It is the goal of Forest River, Inc. that all of our RV owners fully enjoy the RV experience and that customer satisfaction meets or exceeds their expectations!

24/7 EMERGENCY ROADSIDE ASSISTANCE

For a worry-free ownership experience Forest River includes one year of Coach-Net RV Technical & Roadside Assistance with each RV purchase. Whether new to the RV lifestyle or an experienced RV enthusiast, Forest River owners have 24/7 access to technical, operational and emergency road service coverage throughout the US & Canada. Coach-Net's fast, dependable service is just a phone call away.



V-LITE, CLASSIC SUPER LITE TT & FW



SUPER LITE, SUPER V, MICRO LITE AND SHAMROCK

Look for our other popular lines of Flagstaff camping trailers.

FLAGSTAFF

WARRANTY

FOR DETAILS ON FLAGSTAFF'S COMPLETE WARRANTY PROGRAM, SEE YOUR FLAGSTAFF DEALER. When it comes to backing products with the same quality and commitment it does when it begins the manufacturing process, the only name you have to remember when you're looking for a recreational vehicle is Flagstaff. Flagstaff offers the following additional limited warranties to the original purchasers. Consult written warranty for details.

1. Five-year roof warranty,
 2. Twenty-five-year floor warranty,
 3. Five-year frame warranty,
 4. Five-year tent warranty,
 5. Five-year warranty on torsion axle suspension,
 6. Limited lifetime warranty of lifter system,
 7. One-year bumper to bumper.
- Ask your dealer about the available lifetime structural warranty.

YOUR FLAGSTAFF DEALER

201 West Elm Millersburg, IN 46543 | www.forestriverinc.com/Flagstaff
574.642.2640



Learn More
Scan this barcode using a QR Reader on your smart phone to learn more about Forest River.



A Berkshire Hathaway company.